



## BIOLOGICAL SAFETY CABINET CLASS 2

With Microbiological Safety and Electrical Certificate issued  
by TUV Rheinland ID 0000045372.

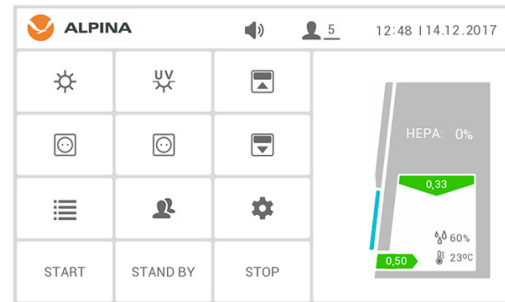


**ALPINA**



## LOW NOISE

By using electrically steered fans – EC type and specially designed distribution system of air flow inside which guarantee parallel airflow and provide silent and comfortable work.



## 7 Inch diameter control panel

Intuitive system SMART-TOUCH helps the user in operation of the cabinet and achievement the desired result.

To provide more comfortable work each of the functions is controlled by dedicated button and menu is available in many languages.



## BESPOKE ORDERS - MADE ESPECIALLY FOR YOU

- cabinets might be modified concerning sizes, functionality and general design,
- we carry out untypical version e. g. dedicated to tests and production of radio radiopharmaceuticals.

## SELECTED FUNCTIONS OF BIO SERIES LAMINAR FLOW CABINETS:

- steering system with touch display 7 languages available,
- automatic filter compensation ensures constant and safe speed of air flow in the cabinet
- hour timer of the cabinet and UV lamp operation
- air flow velocity according PN-EN 12469:2002,
- user-friendly control panel with visual and sound signalization.

# 854

CABINETS

have been  
manufactured for  
our customers.

# 36

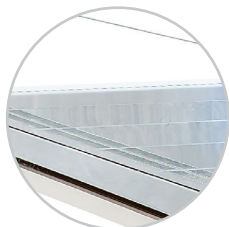
MONTHS

warranty - this  
is warranty time  
of BIO series.



### LIGHTING ABOVE 1400 LUX

Having used the light intensity – 1400 LUX and through proper placing of light source we obtained outstanding, comfortable work's environment for the eyes. The cost-effective lighting with the proper colour provides uniform and complete illumination of the working space.



#### Worktop

Various models of worktop to choose: split or unitary. It is fully made of stainless steel and easy to clean.



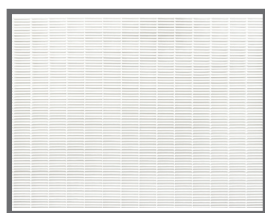
#### Silent-working fans

Electronically controlled fans type EC and modern system of distribution the air flow inside the cabinet provides silent and comfortable work.



#### Armrest

All cabinets are equipped in the removable armrest. It is advised in case of longer work with the cabinet.



### FILTER HEPA 99,995 % FOR MPPS

The highest quality filters assembled in the cabinets are fully controlled and tested in own research lab and give a guarantee of proper air purity in the work environment.

## CONSTRUCTIONS OF BIO SERIES

- front window made of tempered double glass without frame, inclined at an angle of 8°,
- worktop made of stainless steel (full or split),
- permanently fixed „UV“ lamp in the upper part of the workspace, protected from accidental switching on during operation,
- cost-effective light LED,
- side of the cabinets with media holes.



### LOW ENERGY CONSUMPTION

Application of the newest ventilators EC type and cost-effective illumination reduced the electrical energy consumption by 76 % in the work mode and by 87 % in the standby mode, in comparison to the older models.

# TECHNICAL DATA AND COMPARISON OF MODELS

	Unit	BIO 100 / BIO100 CYTO	BIO 130 / BIO130 CYTO	BIO 160 / BIO160 CYTO	BIO 190 / BIO190 CYTO
External dimensions width / length / height CYTO version + 5 cm higher	mm	1040 / 790 / 2094	1340 / 790 / 2094	1640 / 790 / 2094	1960 / 790 / 2094
Internal dimension	mm	950 / 645 / 660	1250 / 645 / 660	1561 / 645 / 660	1876/ 645 / 660
Number of fans	pcs.	2	3	4	5
Number of plates in worktop	pcs.	3 or 1, 2	4 or 1, 2	5 or 1, 2	6 or 1, 2
Maximum height of window panel lifting during work	mm	250			
Maximum height of front window panel lifting	mm	500			
Air-flow	m/s	0,25 - 0,50			
Number of HEPA filter main and outlet	pcs.	1 - main filter and 1 - outlet filter			
Hepa preliminary filter and carbon filter - only CYTO version	pcs.	1 - Hepa preliminary filter and 1 - carbon filter			
HEPA filter efficiency	%	> 99,995 % for MPPS - H14			
Loudness level PN-EN ISO 11201 - BIO / BIO CYTO	dB	< 49 / < 52	< 53 / < 56	< 56 / < 60	< 57 / < 61
Illuminance	lux	> 1400	> 1500	> 1600	> 1600
Power consumption: Work with light and without light BIO/BIO CYTO	Watt	112 / 118	119 / 127	155 / 163	177 / 187
	Watt	26 / 32	31 / 38	45 / 53	60 / 70
Power of UV germicidal lamp	Watt	15	30		
Number of electric sockets inside the chamber	pcs.	2		4	
Control panel - with touchscreen	available languages: EN, DE, SP, PL, TR, FR, IT				
Gas, vacuum or air valve	optional				
Equipment weight	kg	190	260	330	400

# 31

COUNTRIES

have been used  
Alpina laminar flow  
cabinets.

# 7

LANGUAGES

available  
is for comfort  
of user.